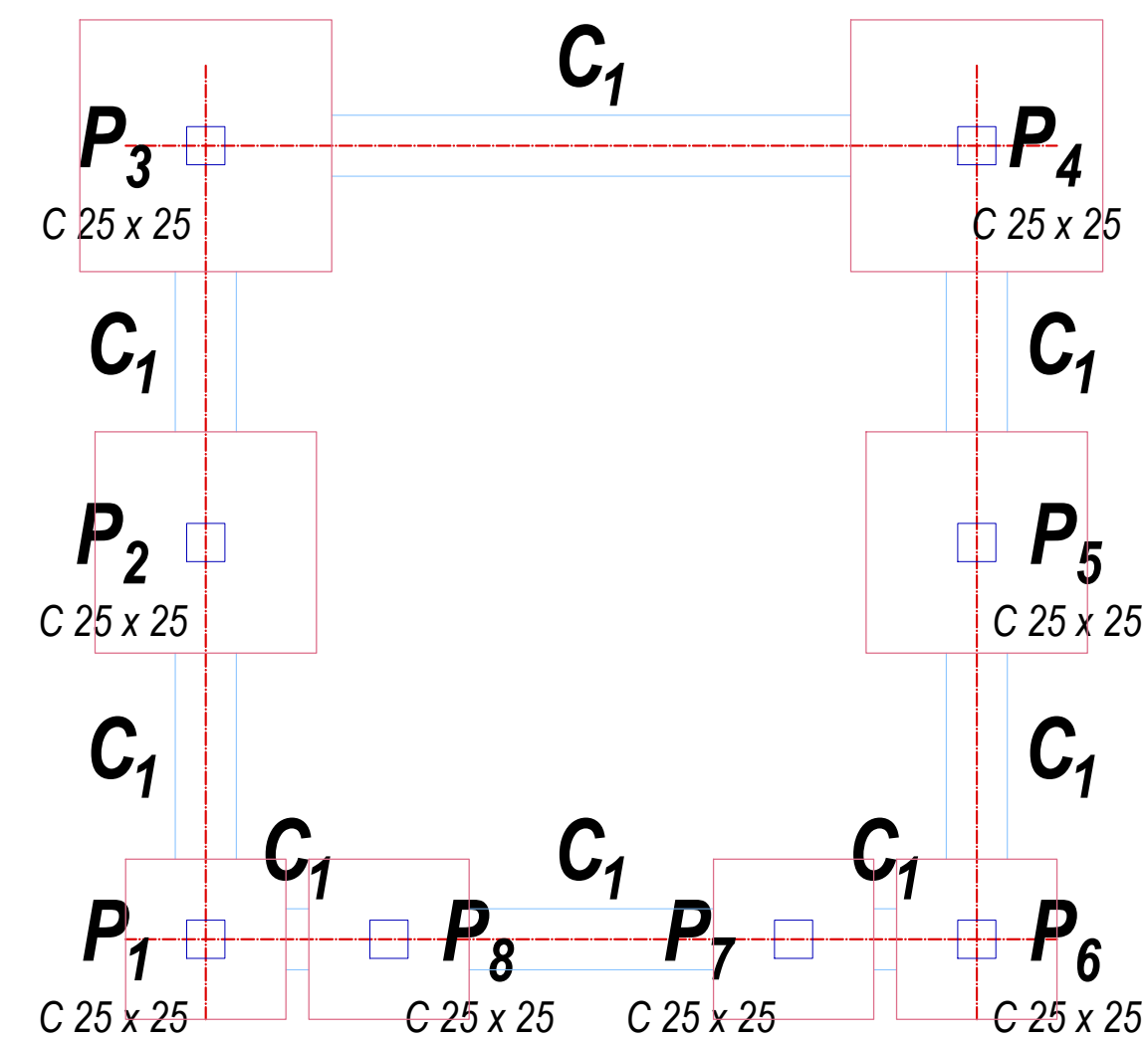
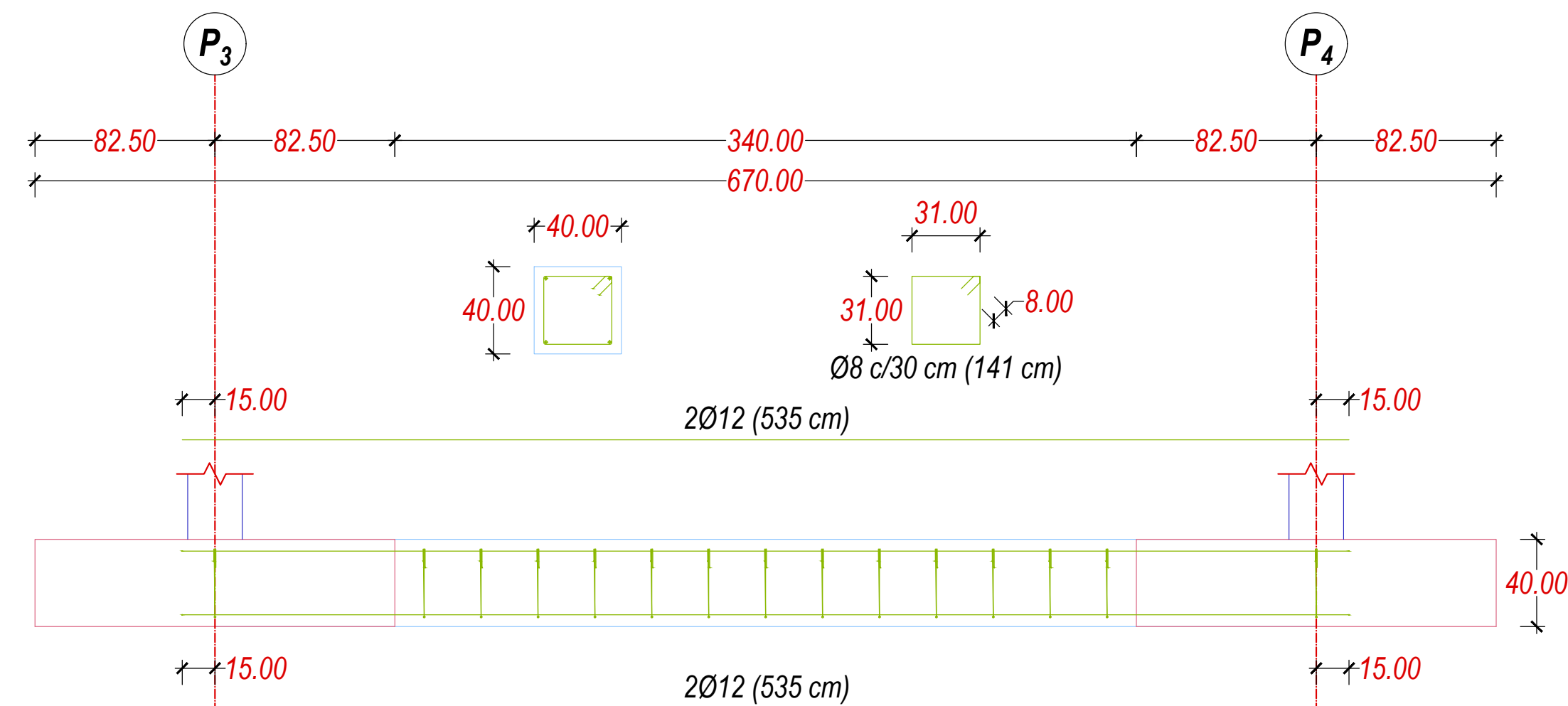
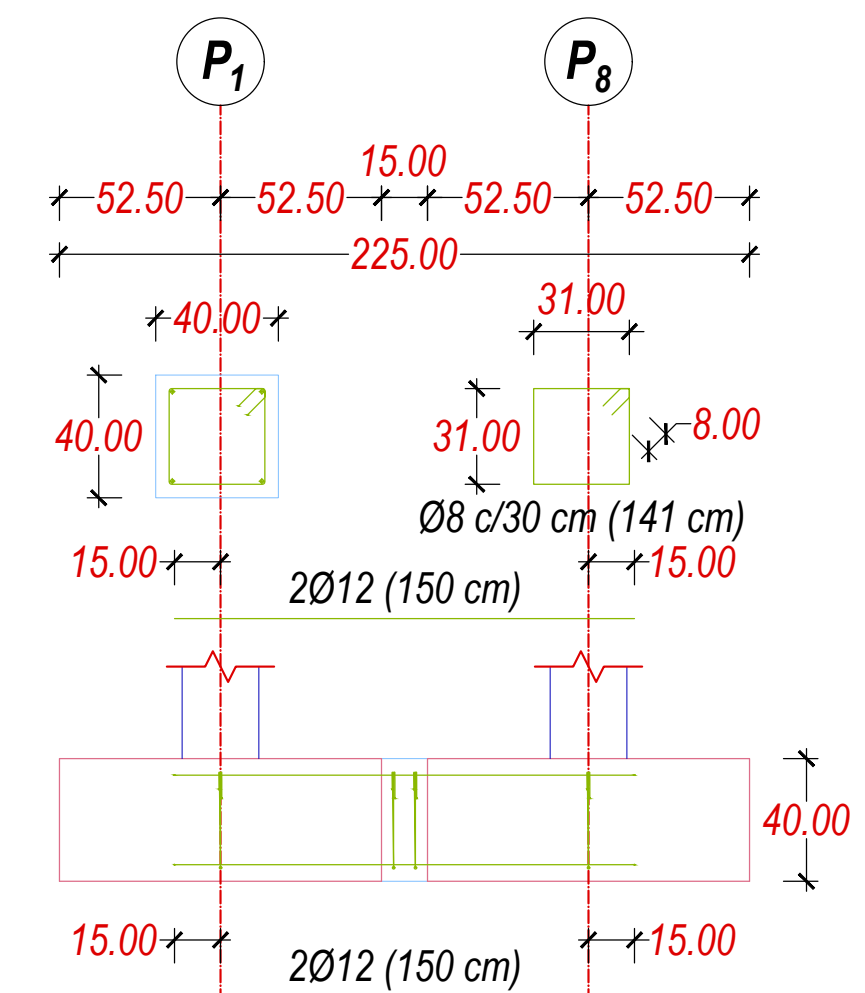
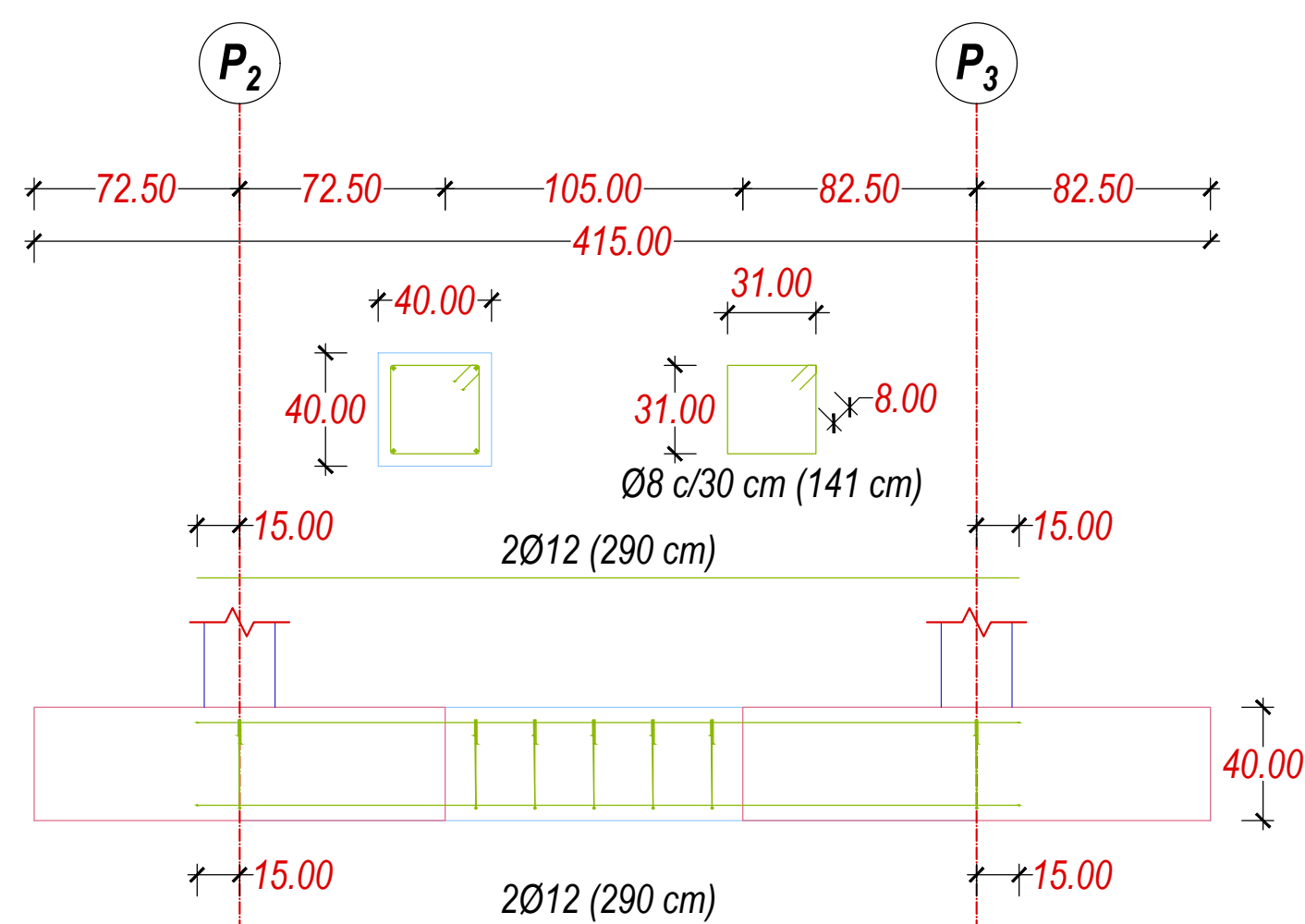
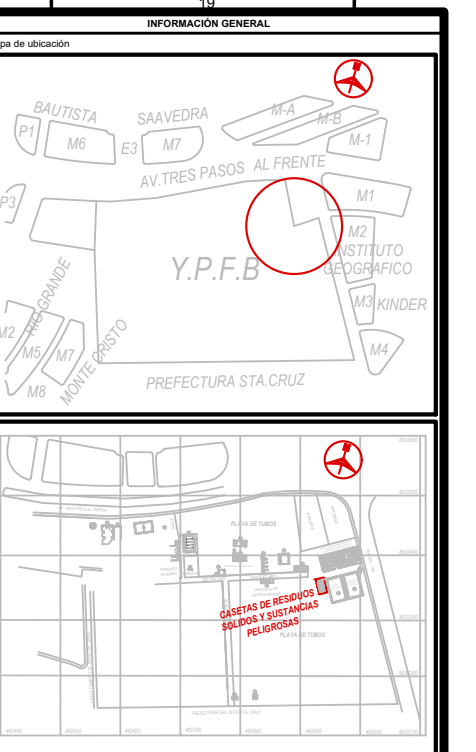
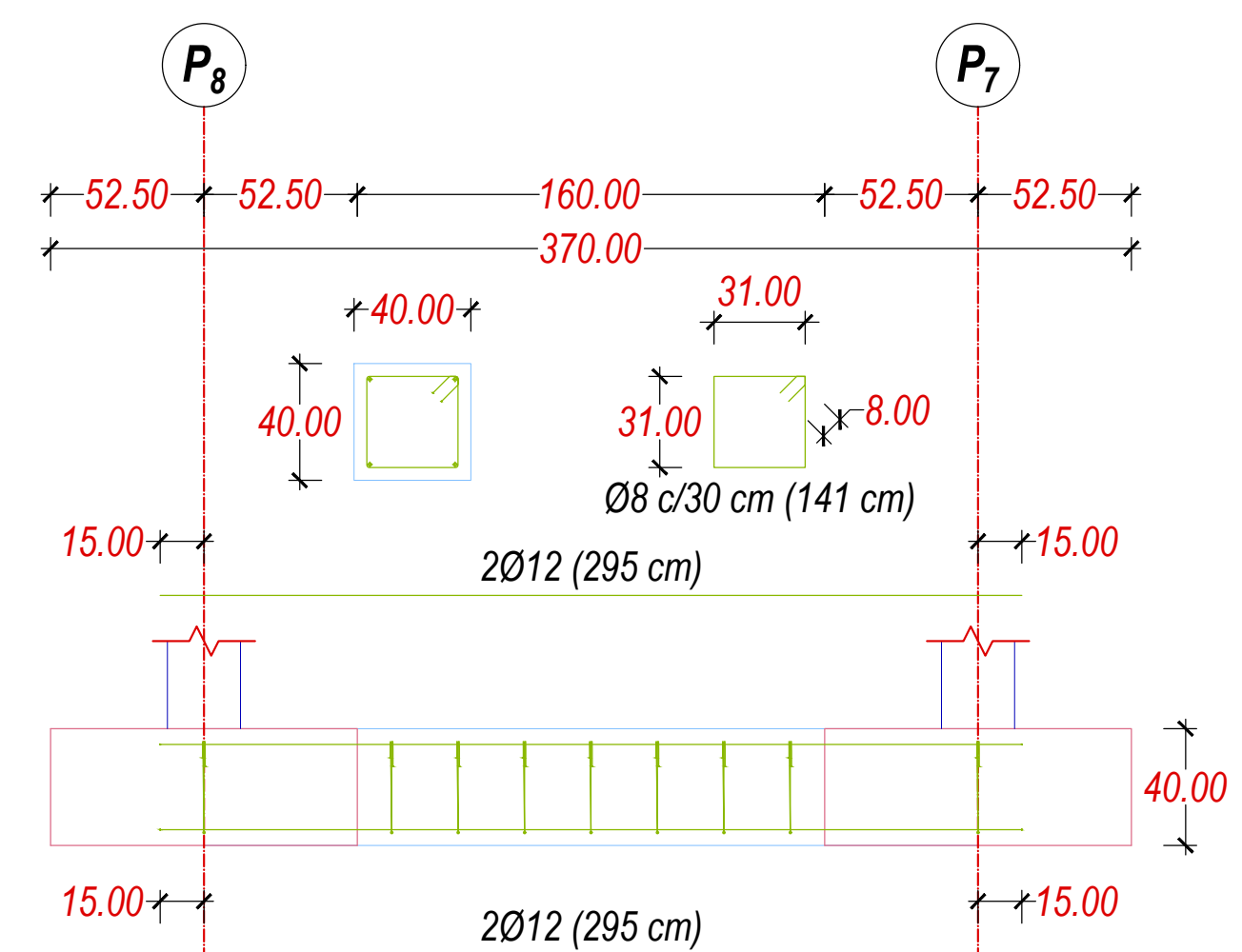


CASETA DE SUSTANCIAS PELIGROSAS Y RESIDUOS SOLIDOS






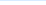



$$C_1 (P_3 - P_4)$$

$$C_1 (P_1 - P_8), C_1 (P_7 - P_6)$$

$$C_1(P_2 - P_3), C_1(P_2 - P_1), C_1(P_4 - P_5), C_1(P_5 - P_6)$$


RESUMEN DE ACERO - VIGAS DE ARRIOSTRE						
REFERENCIAS	DIAMETRO (mm)	CANTIDAD	LONG. PARCIAL (cm)	LONG. TOTAL (cm)	PESO (Kg)	
$C_1 (P_3 - P_d)$	Ø 12	2	535	1070	9.50	
	Ø 12	2	535	1070	9.50	
	Ø 8	13	141	1833	7.20	
	PESO TOTAL + 10%				28.82	
$C_1 (P_3 - P_d) = C_1 (P_4 - P_d)$ $C_1 (P_4 - P_d) = C_1 (P_5 - P_d)$	Ø 12	2	290	580	5.10	
	Ø 12	2	290	580	5.10	
	Ø 8	5	141	705	2.80	
	PESO TOTAL + 10% (x 4 pza)				57.20	
$C_1 (P_3 - P_d) = C_1 (P_7 - P_d)$	Ø 12	2	150	300	2.70	
	Ø 12	2	150	300	2.70	
	Ø 8	2	141	282	1.10	
	PESO TOTAL + 10% (x 2 pza)				14.30	
$C_1 (P_8 - P_7)$	Ø 12	2	295	590	5.20	
	Ø 12	2	295	590	5.20	
	Ø 8	7	141	987	3.90	
	PESO TOTAL + 10%				15.73	
					Ø 8	26.95
					Ø 12	89.10
				PESO TOTAL (Kg)	116.05	

RESUMEN DE ACERO VIGAS DE ARRIOSTRE (m)	LONG. TOTAL (m)	PESO + 10% (Kg)	PESO TOTAL ASUMIDO (Kg)
AEH-400CN Ø 8	62.04	26.95	120.00
Ø 12	91.60	89.10	

$$C_1 (P_8 - P_7)$$


DOCUMENTOS DE REFERENCIA	
DWG Nº	DESCRIPCIÓN

LEYENDA	
SÍMBOLO	DESCRIPCIÓN
	ZAPATA DE H ¹ A*
	COLUMNA DE H ¹ A*
	VIGA DE H ¹ A*
	ACERO ESTRUCTURAL
	REFERENCIAS O EJES
	CORREAS
	PERNOS DE ANCLAJE
	SOLDADURA

[illegible]